


stevens
and carter

- 3 Double Bedrms
- Dressing Room to Master Bedroom
- Well Presented
- Kitchen/Diner
- Conservatory
- Garage and Parking for 2 Cars
- Close to Town and Amenities

£1,450



 3 BEDROOM

 1 RECEPTION

 1 BATHROOM

 GARAGE

South Close, Hailsham

South Close, Hailsham

DESCRIPTION

This well-presented three-bedroom End of Terrace home is ideally located within close proximity to the town centre, offering both convenience and comfortable living.

The property features a kitchen/diner, perfect for family meals and entertaining, along with a bright conservatory providing additional living space. A downstairs cloakroom adds practicality for everyday living.

Upstairs, the master bedroom benefits from a dressing room, while two further bedrooms are well proportioned and versatile. The home is complemented by a garage and two off-road parking spaces, ensuring ample parking and storage.

Ideal for families or professionals seeking a well-located home. Call us on 01323 840666 for your appointment to view.





South Close, Hailsham

Entrance Hall 2.52 x 0.99 (8'3" x 3'2")

WC 1.47 x 0.78 (4'9" x 2'6")

Kitchen/Diner 4.73 x 2.87 (15'6" x 9'4")

Lounge 4.73 x 3.63 (15'6" x 11'10")

Conservatory 4.45 x 2.65 (14'7" x 8'8")

Landing 1.77 x 1.61 (5'9" x 5'3")

Bedroom 1 2.89 x 2.78 (9'5" x 9'1")

Dressing Room 1.79 x 1.73 (5'10" x 5'8")

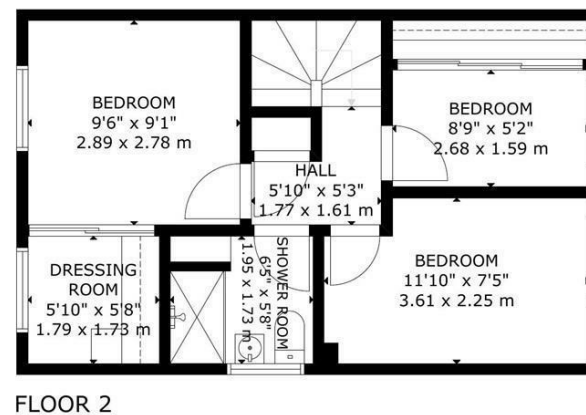
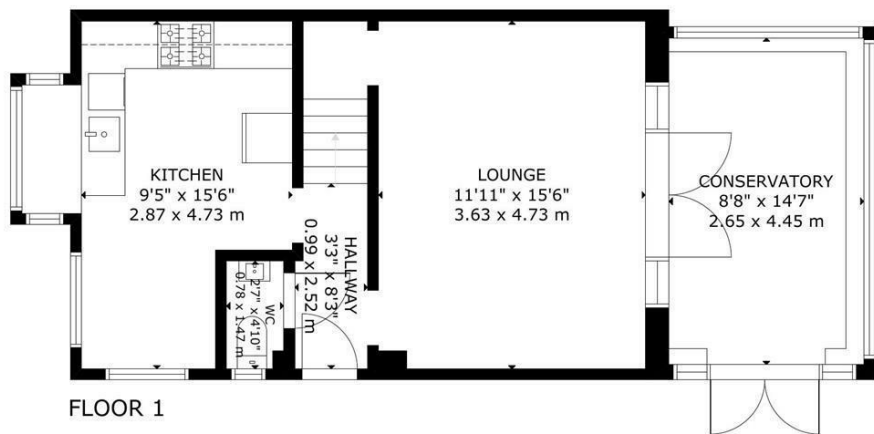
Bedroom 2 3.61 x 2.25 (11'10" x 7'4")

Bedroom 3 2.68 x 1.59 (8'9" x 5'2")

Shower Room 1.95 x 1.73 (6'4" x 5'8")



South Close, Hailsham



GROSS INTERNAL AREA
TOTAL: 87 m²/933 sq ft
FLOOR 1: 51 m²/549 sq ft, FLOOR 2: 36 m²/384 sq ft
SIZE AND DIMENSIONS ARE APPROXIMATE, ACTUAL MAY VARY

